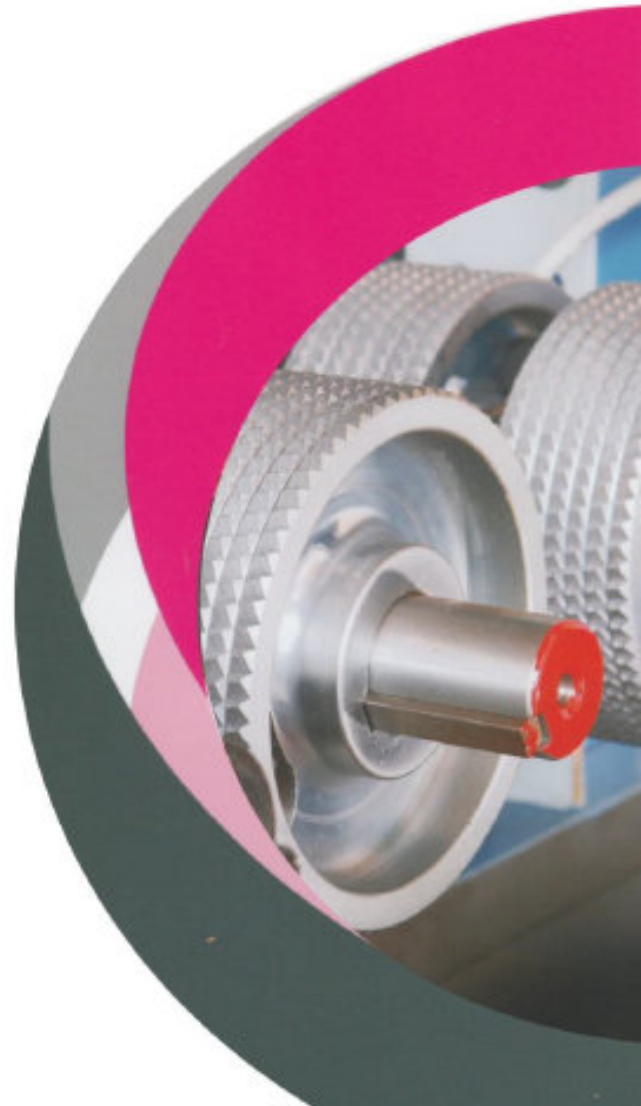




2021 - 2022 Parts Catalog

**PERFECT
QUALITY**



Perfect Quality Replacement Parts

At Affordable Prices

KD Manufacturing is a world leader in design and production of after-market replacement parts and accessories for European made Woodworking Machinery. Utilizing leading-edge manufacturing techniques, high grade materials and modern production equipment we have become a leader in cost effective high quality replacement part design and production.

Our design team consists of experienced people having worked more than 20 years with suppliers and manufacturers around the world to provide high quality parts for European made Woodworking Machinery. We understand the importance of Woodworking Machinery reliability and constantly incorporate technologically appropriate knowledge in order to design, redesign or improve product/service functionality in every step throughout our production processes. Our inherent goal is to maximize replacement part reliability during our application of castings, machining processing, joining processes, metal cutting, tool design, metrology, machine tools, machining systems, automation, jigs and fixtures, and die and mould design.

Within 12 years we have become the worldwide market leader in design and production of consumable replacement parts. Thanks to our staff of qualified engineers and a special assemblage and partnership with German equipment manufacturing specialists, we bring together the knowledge needed to produce high quality and reliable replacement parts.

In fact, we welcome inquiries about special design and production of after-market replacement parts and accessories for edge-banding machines, soft former, post-former, double end tenoner and combination machines. Our design engineers can work directly with you and your parts drawings to produce new parts to your specifications.

Perfect Quality Replacement Parts



At Affordable Prices



KD is a leading manufacturer of consumable replacement parts needed on industrial machinery for wood, plastic and non-ferrous metals.

We produce some of the best parts in the industries at affordable prices in high quality made with high grade raw materials.



Edge Bander Conveyance Chain

conveyance chain

The company provides chain pads, pressure wheels and top pressure belts for all varieties of edge banding machines and double-ended tenoners, eccentric wheels for sliding table saws, fabric polishing wheels for edge banding machines, pressure wheels for 4-sided moulders, and all kinds of rubber and plastic products for all different machine types in the world.

Chain Pads and Top Rollers



Double End Profiler and Flooring Lines

We manufacture Chain Pads and Pressure Rollers to OEM-Quality by use of high grade raw materials. The OEM dimensions will be checked in every production step.



FLK001
Chain Pads and Top pressure roller
79 x 61mm
Wheel: 70 x 20 x 25mm



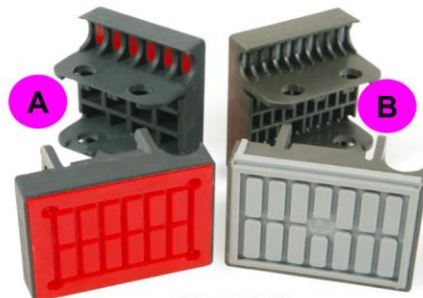
FLK002
Chain Pads
98 x 80mm



FLK003
Chain Pads
80 x 73 x 20mm



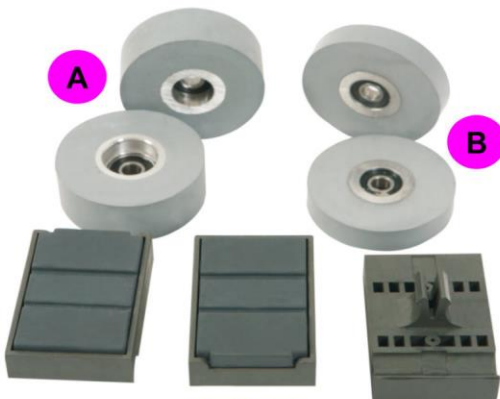
FLK004
Edge Bander Chain Pads
98 x 80mm



FLK005
Chain Pads
80 x 62 x 18mm



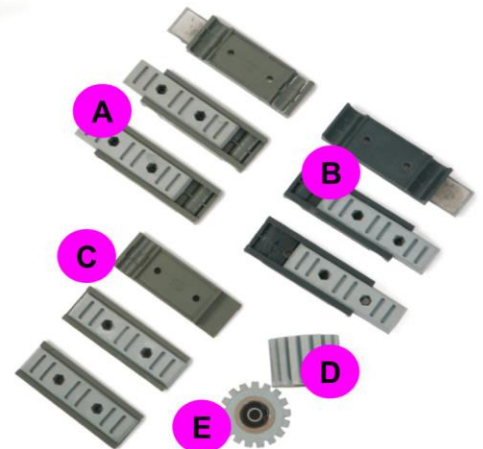
FLK006
Chain Pads
80 x 30 x 18mm
Wheel: 70 x 20 x 25mm



FLK007
Chain Pads
71 x 48 x 18mm
A Wheel: 65 x 8 x 25mm
B Wheel: 65 x 8 x 14mm



FLK008
Chain Pads
(With Clips)
80 x 60mm
Wheel: 70 x 18 x 25mm



FLK009
Chain Pads
100 x 35mm
D Wheel: 54 x 8 x 40mm
E Wheel: 54 x 8 x 30mm

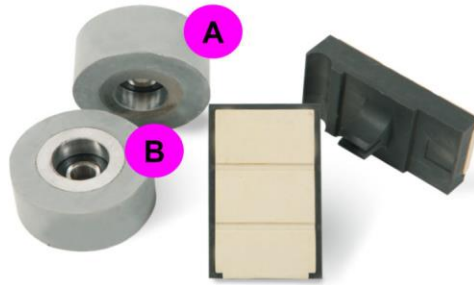
Chain Pads and Top Rollers



PERFECT
QUALITY



FLK010
Chain Pads
80 x 50 x 18mm



FLK011
Chain Pads and Rollers
63 x 37 x 15mm
A Wheel: 48 x 8 x 25mm
B Wheel: 48 x 8 x 12mm



FLK012
Chain Pads and Rollers
71 x 37 x 18mm
A Wheel: 48 x 8 x 25mm
B Wheel: 48 x 8 x 12mm



FLK013
Chain Pads
63 x 25 x 14mm



FLK014
Chain Pads
80 x 75 x 18mm



FLK015
Chain Pads
80 x 75 x 18mm



FLK016
Chain Pads and Rollers
79 x 72 x 18mm
Wheel: 65 x 8 x 30

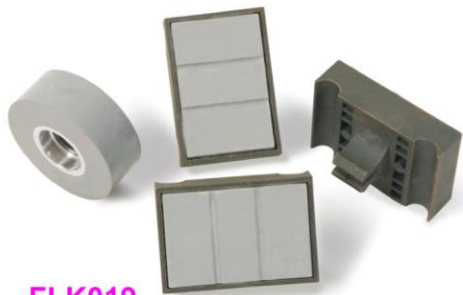


FLK017
Chain Pads and Roller
95 x 48 x 25mm
Wheel: 62 x 16 x 24mm

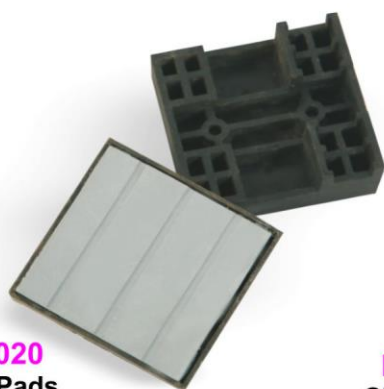


FLK018
Chain Pads
130 x 77 x 48mm

Chain Pads and Top Rollers



FLK019
Chain Pads
71 x 48 x 20mm
Wheel: 65 x 8 x 25mm



FLK020
Chain Pads
72 x 70mm



FLK021
Chain Pads
85 x 82 x 28mm

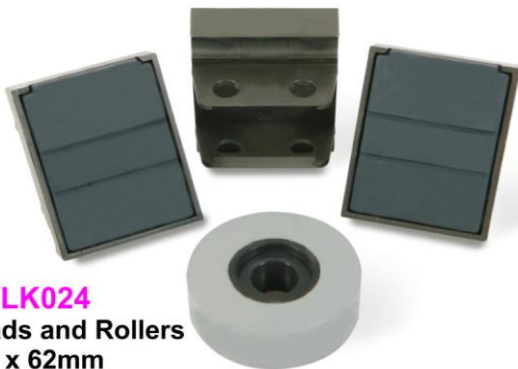


FLK022
Chain Pads and Rollers
80 x 74mm
Wheel: 67 x 8 x 27mm



FLK023
Chain Pads and Rollers
80 x 72 x 18mm

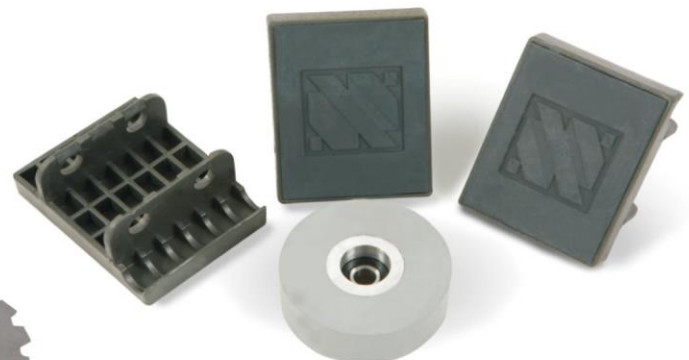
Wheel: 65 x 12 x 28mm
Wheel: 65 x 12 x 14mm
Wheel: 65 x 8 x 14mm
Wheel: 65 x 8 x 28mm



FLK024
Chain Pads and Rollers
80 x 62mm
Roller: 65 x 8 x 25mm



FLK025
Chain Pads
110 x 80 x 25mm



FLK026
Chain Pad and Rollers
79 x 61 x 18mm
60 x 8 x 24mm

Roller: 62 x 8 x 25mm

Chain Pads and Top Rollers



**PERFECT
QUALITY**



FLK027
Chain Pad and Rollers
80 x 62mm
Roller: 65 x 8 x 25mm



SLK028
Chain Pads
77 x 72 x 16mm



SLK029
Chain Pads
95 x 80 x 18mm



SLK030
Chain Pads
110 x 80 x 18mm



SLK031
Chain Pads
100 x 74 x 25mm



SLK031A
Chain Pads
100 x 80 x 15mm



SLK031B
Chain Pads
96 x 75 x 19mm



SLK033A
Chain Pads
97 x 75 x 18mm



SLK033B
Chain Pads
117 x 75 x 16.5mm



SLK033C
Chain Pads
117 x 75 x 16.5mm

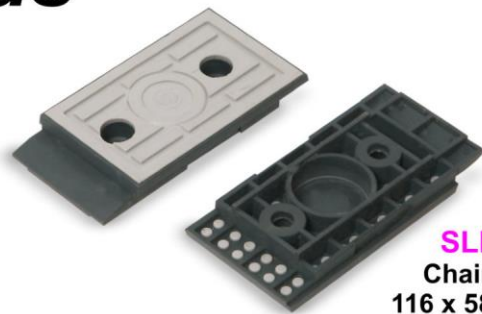
Chain Pads



**PERFECT
QUALITY**



SLK034
Chain Pads
129 x 72 x 48mm



SLK035
Chain Pads
116 x 58 x 18mm



SLK036
Chain Pads
116 x 69 x 18mm



SLK037
Chain Pads
100 x 62 x 52mm



SLK038
Chain Pads
115 x 61 x 17mm



SLK039
Chain Pads
115 x 68 x 17mm



SLK040A
Chain Pads
75 x 73 x 15mm



SLK040B
Chain Pads
75 x 72 x 13mm



SLK041
Chain Pads
120 x 86 x 20mm



SLK042
Chain Pads
115 x 61 x 17mm



SLK043
Chain Pads
98 x 80 x 19mm



SLK044
Chain Pads
1290x 86 x 20mm



SLK045
Chain Pads
98 x 70 x 29mm

Vacuum Blocks and Cups



ZXP046
Vacuum Blocks
160 x 152 x 24mm



ZXP047
Vacuum Blocks
160 x 160 x 45mm



ZXP049
Vacuum Cups for
CNC Machines
60 x 45mm



ZXP051
Vacuum Cups for
CNC Machines
109 x 54 x 18mm



ZXP053
Vacuum Cups
82 x 38mm



ZXP050
Vacuum Cups
109 x 54 x 18mm



ZXP052
Vacuum Cups for
CNC Machines
68 x 30mm

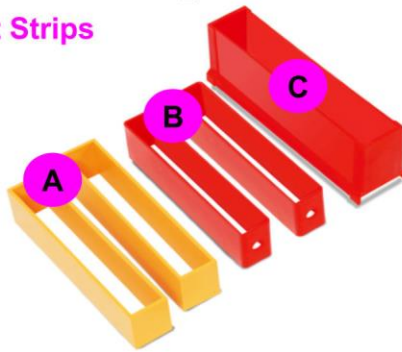


ZXP054
Vacuum Cups for
CNC Machines
95 x 24mm

Dust Proof Strips and Safety Covers

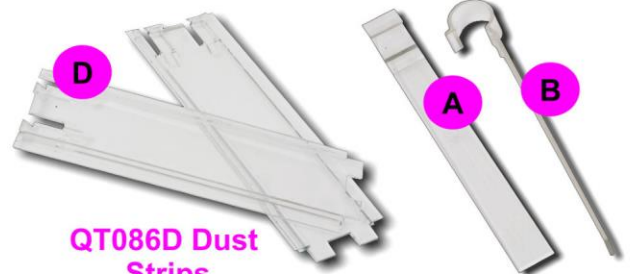
QT083, QT084, QT085 - Dust Strips

- A** QT083 200 x 28 x 50mm
- B** QT084 210 x 32 x 45mm
- C** QT085 245 x 41 x 80mm



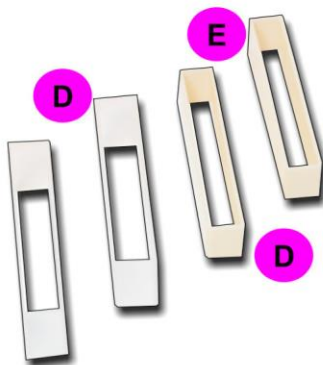
D QT086 303 x 106mm

QT086A, QT086B
Dust Strips



QT086D Dust
Strips

- A** QT086 220 x 49mm
- B** QT086 220 x 49mm



QT083, QT084 Dust Strips

E QT084 162 x 22 x 44mm

D QT083 162 x 32 x 65mm

QT086C Dust Strip
QT086C 274 x 45mm

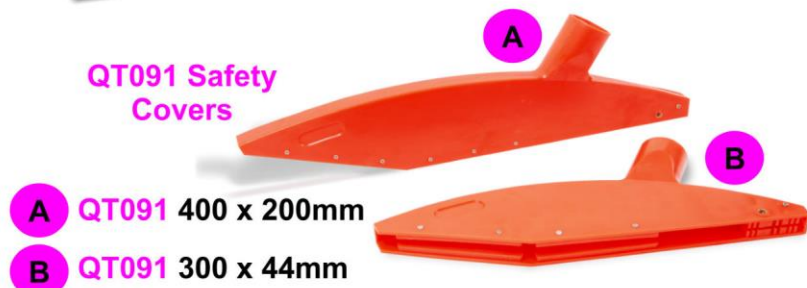
QT087 220 x 49mm



QT087 Dust
Strip



QT091 Safety
Covers



A QT091 400 x 200mm

B QT091 300 x 44mm

Finest Quality Buffing Wheels "Made from Cotton"



(1) PGL064 Buffer Wheels
150 OD x 50 ID x 20mm

(2) PGL064A Buffer Wheels
150 OD x 50 ID x 20mm

(3) PGL064B Buffer Wheels
180 OD x 50 ID x 20mm



(4) PGL065 Buffer Wheels
120 OD x 19 ID x 10mm

(5) PGL065A Buffer Wheels
120 OD x 19 ID x 10mm

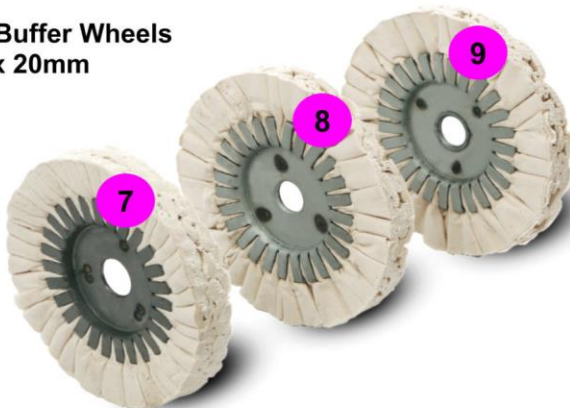
(6) PGL065B Buffer Wheels
120 OD x 19 ID x 20mm



(7) PGL066 Buffer Wheels
1200OD x 19 ID x 20mm

(8) PGL067A Buffer Wheels
150 OD x 19 ID x 20mm

(9) PGL067B Buffer Wheels
150 OD x 22 ID x 20mm



(10) PGL068A Buffer Wheels
160 OD x 19 ID x 20mm

(11) PGL068B Buffer Wheels
150 OD x 14 ID x 20mm

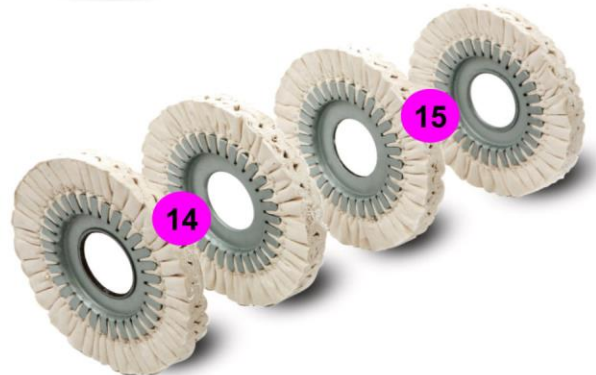


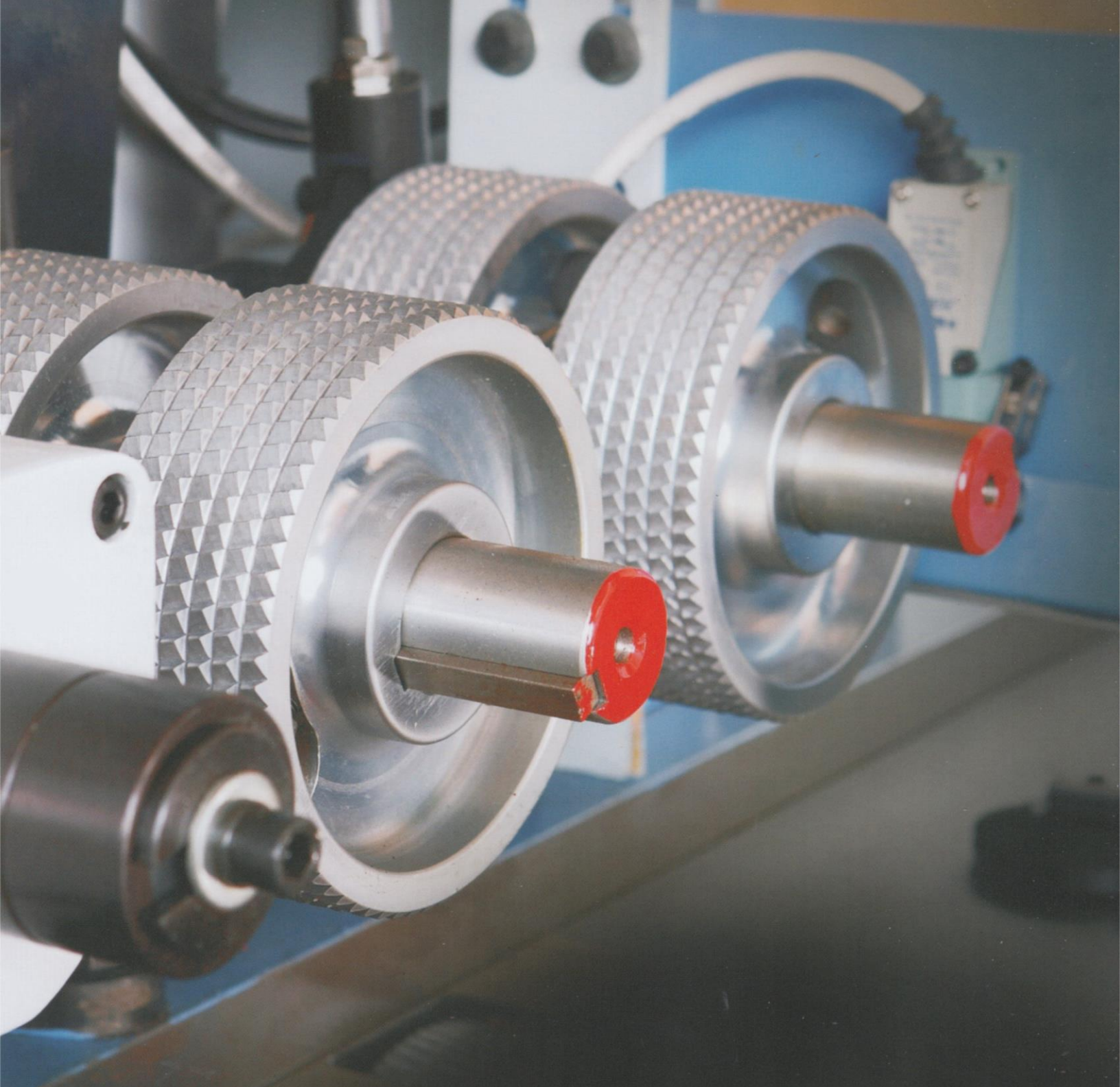
(12) PGL069 Buffer Wheels
150 OD x 60 ID x 20mm

(13) PGL070 Buffer Wheels
178 OD x 56 ID x 20mm

(14) PGL071A Buffer Wheels
180 OD x 50 ID x 20mm

(15) PGL071B Buffer Wheels
180 OD x 52 ID x 20mm





**PERFECT
QUALITY**

Feed, Support and Guide Rollers



PERFECT
QUALITY

Feeding Wheels and Rollers

- (7) QT113 Roller
120 OD x 35 ID x 60mm
- (8) QT114 Roller
120 OD x 30 ID x 50mm
- (9) QT115 Roller
120 OD x 50 ID x 60mm
- (10) QT116A Roller
100 OD x 25 ID x 60mm
- (11) QT116B Roller
100 OD x 30 ID x 50mm
- (12) QT117A Roller
140 OD x 35 ID x 50mm
- (13) QT117B Roller
140 OD x 35 ID x 50mm
- (14) QT117C Roller
140 OD x 35 ID x 50mm



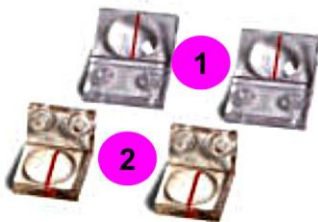
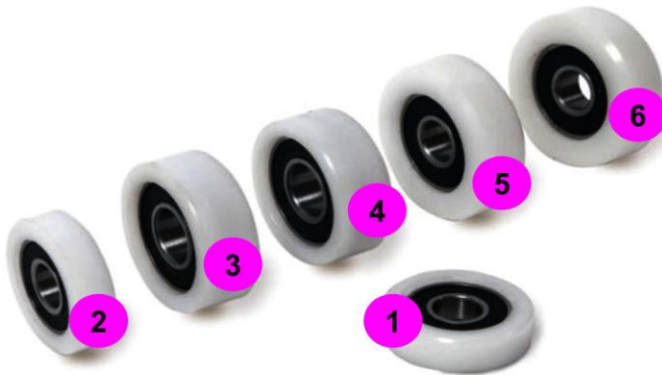
- (1) QT109A Wheel
140 OD x 35 ID x 50mm
- (2) QT109B Wheel
140 OD x 30 ID x 50mm
- (3) QT110 Wheel
140 OD x 35 ID x 50mm
- (4) QT111A Wheel
140 OD x 35 ID x 25mm
- (5) QT111B Wheel
140 OD x 35 ID x 15mm
- (6) QT112 Wheel
140 OD x 35 ID x 25mm



- (1) QT077A 50 OD x 10 ID x 50mm
- (2) QT077A 50 OD x 10 ID x 30mm
- (3) QT077A 50 OD x 10 ID x 22mm

- (1) QT073 Wheels
38 OD x 13 ID x mm
- (2) QT073 Wheels
38 OD x 11 ID x mm
- (3) QT073 Wheels
42 OD x 16 ID x mm
- (4) QT073 Wheels
43 OD x 16 ID x mm
- (5) QT073 Wheels
48 OD x 16 ID x mm
- (6) QT073 Wheels
48 OD x 16 ID x mm

- (4) QT077B Wheels
61 OD x 10 ID x 30mm
- (5) QT077B Wheels
60 OD x 10 ID x 30mm



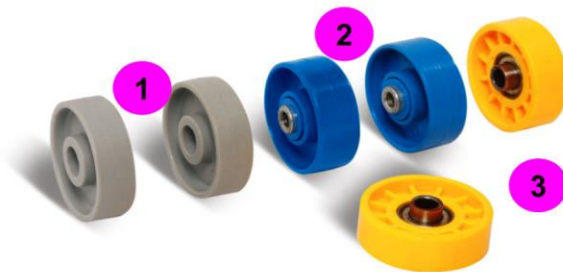
- (1) QT092 45 OD x 31 ID x 8mm
- (2) QT092 38 OD x 25 ID x 8mm

- (1) QT093 65 OD x 45 ID x 41mm
- (2) QT093 65 OD x 45 ID x 18mm

PERFECT
QUALITY

Support Rollers

QT097A, QT097B Rollers
28 OD x 3 ID x 26mm



(1) QT075 Rollers 48 OD x 6 ID x 16mm

(2) QT075 Rollers 48 OD x 8 ID x 16mm

(3) QT075 Rollers 48 OD x 10 ID x 16mm

(4) QT075 Rollers 48 OD x 8 ID x 16mm



QT094 Feed Rollers

- (1) QT094 65 OD x 8 ID x 55mm
- (2) QT094 33 OD x 12 ID x 40mm
- (3) QT094 40 OD x 14 ID x 50mm
- (4) QT094 40 OD x 20 ID x 60mm
- (5) QT094 36 OD x 18 ID x 68mm
- (6) QT094 40 OD x 16 ID x 68mm
- (7) QT094 35 OD x 8 ID x 40mm
- (8) QT094 30 OD x 18 ID x 60mm
- (9) QT094 36 OD x 8 ID x 55mm
- (10) QT094 40 OD x 20 ID x 65mm



QT074 Air Table Float Jets

- (1) QT074 18 OD x 15mm
- (2) QT074 15 OD x 15mm
- (3) QT074 20 OD x 14mm

QT076 Rollers

- (1) QT076 60 OD x 6 ID x 42mm
- (2) QT076 60 OD x 6 ID x 42mm
- (3) QT076 50 OD x 8 ID x 15mm



QT090 Hot Rollers

- (1) QT090 30 OD x 110mm
- (2) QT090 25 OD x 110mm
- (3) QT090 16 OD x 8 ID x 36mm
- (4) QT090 40 OD x 10 ID x 14mm
- (5) QT090 24 OD x 12 ID x 80mm
- (6) QT090 15 OD x 8 ID x 36mm
- (7) QT090 31 OD x 8 ID x 10mm
- (8) QT090 31 OD x 8 ID x 8mm
- (9) QT090 37 OD x 8 ID x 10mm
- (10) QT090 37 OD x 10 ID x 12mm
- (11) QT090 16 OD x 8 ID x 36mm
- (12) QT090 26 OD x 16 ID x 60mm
- (13) QT090 24 OD x 17 ID x 52mm



QT079 Belt Guide Rollers

- (1) QT079 48 OD x 6 ID x 16mm
- (2) QT079 48 OD x 8 ID x 16mm
- (3) QT079 48 OD x 10 ID x 16mm
- (4) QT079 48 OD x 8 ID x 16mm
- (5) QT079 48 OD x 8 ID x 16mm
- (6) QT079 48 OD x 10 ID x 16mm
- (7) QT079 48 OD x 8 ID x 16mm

QT081 Rollers

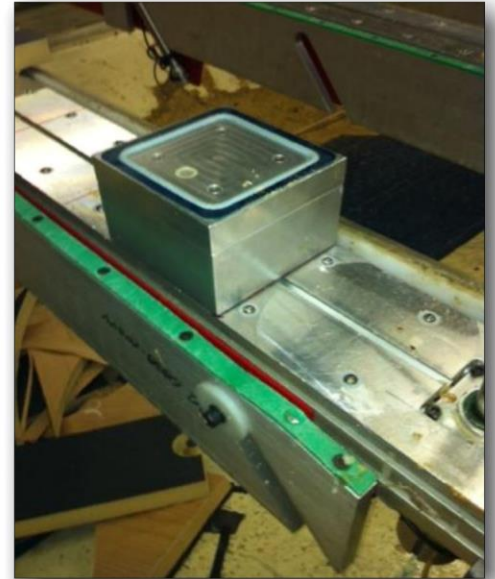
- (1) QT081 75 OD x 10 ID x 43mm
- (2) QT081 44 OD x 10 ID x 43mm



Perfect Quality Replacement Parts



At Affordable Prices



KD is a leading manufacturer of consumable replacement parts needed on industrial machinery for wood, plastic and non-ferrous metals.

We produce some of the best parts in the industries at affordable prices in high quality made with high grade raw materials.

**European Made Woodworking Machinery
Parts and Service / Consulting**

Klaus Duda / Technical Sales

Tap-Resources / Wizard Services, LLC

1648 Taylor Road

Port Orange, FL 32128

www.tap-resources.com

www.kd-sales.com

PH +1 386 361 4651

FAX +1 347 695 2653

**PERFECT
QUALITY**

Delivered...



Wizard Services, LLC